

MONTHLY MEMBERSHIP PROGRESS REPORT

District 325 F

Results as of: 3/31/2024

GMT:

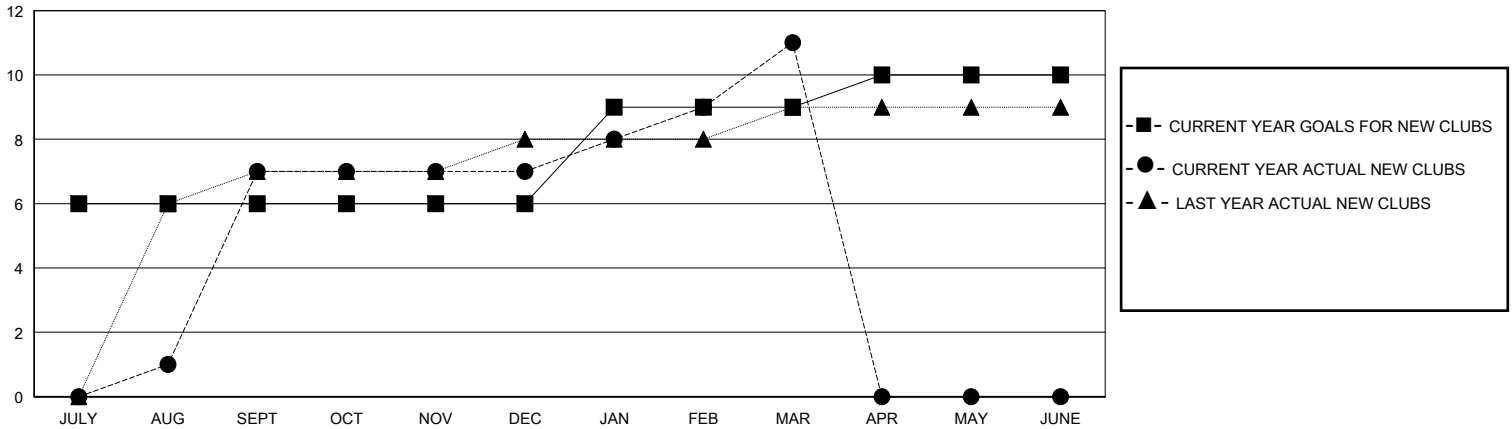
LOCATION NEPAL

GMT CA

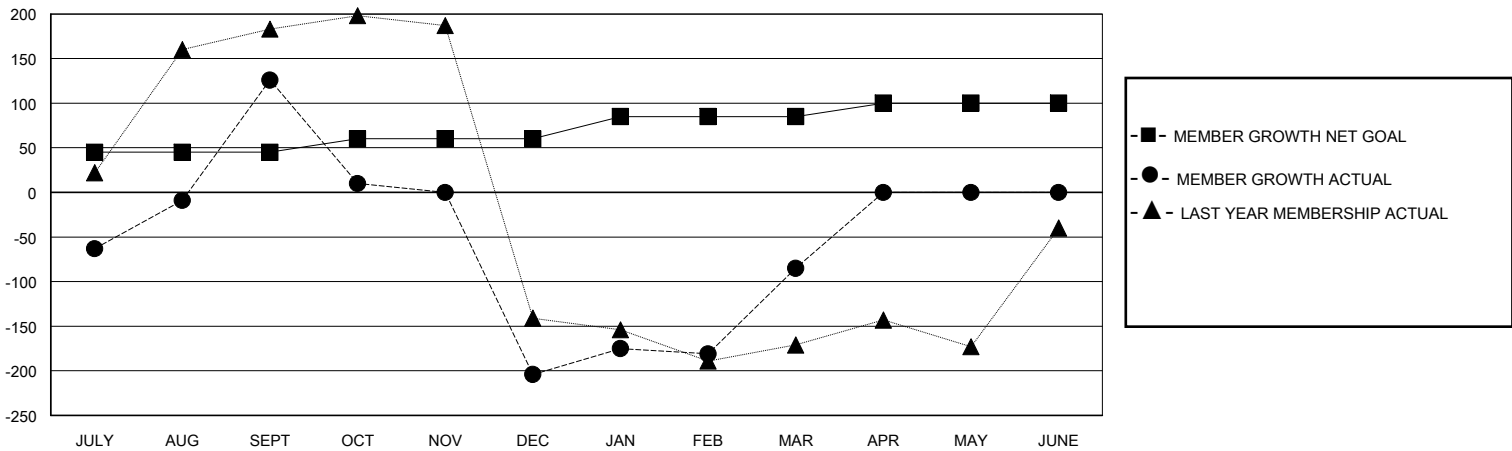
Clubs			
RESULTS FOR 2023-2024			
QUARTER	NEW CLUB GOAL	NEW CLUBS	DROPPED CLUBS
JULY/AUG/SEPT	6	7	0
OCT/NOV/DEC	0	0	5
JAN/FEB/MAR	3	4	3
APR/MAY/JUNE	1	0	0

Members			
RESULTS FOR 2023-2024			
QUARTER	MEMBER GROWTH NET GOAL	MEMBER GROWTH ACTUAL	DROPPED MEMBERS ACTUAL (including transfers)
JULY/AUG/SEPT	45	331	197
OCT/NOV/DEC	15	72	399
JAN/FEB/MAR	25	220	89
APR/MAY/JUNE	15	0	0

GOALS AND ACTUAL NEW CLUBS CUMULATIVE



GOALS AND ACTUAL MEMBERS CUMULATIVE



DROPPED CLUBS: 8	74 CLUBS OF 116 ADDED 1 OR MORE NEW MEMBERS	GENDER DISTRIBUTION	
		MALE 1,798 (68.73%)	FEMALE 818 (31.27%)
DROPPED MEMBERS		CLICK HERE FOR CUMULATIVE MEMBERSHIP DATA	TOTAL FAMILY UNIT MEMBERS 1,937
DECEASED 3	CLUB CANCELLED 79		FAMILY MEMBERS PAYING HALF DUES 1,316
OTHER 603	TOTAL 685		